



Drive System	2
Bladeguard Assembly	3
Flange Assembly	4
Clutch Assembly	6
Handle Assembly	7
Control System	8
Air Filter Assembly	10
Carburetor Assembly	12
Recoil Assembly	13
Ignition Assembly	15
Cylinder Assembly	16
Muffler Assembly	18
Crankshaft Assembly	19
Crankcase Assembly	20
Wet Cutting Kit	21

Quick Reference Service Filters, Belts and Overhaul Kits

Part Number	Description	Qty. Req
92001-01000003	V-Belt	1
92001-05000002	Foam Air Filter Element	1
92001-05010100	Paper Air Filter Element	1
T4106	Spark Plug	1
	Overhaul Kit	
Includes the following:		1
92001-09000001	Cylinder	1
92001-10000003	Gasket	1
92001-11000001	Wrist Pin	1
92001-11000002	Retaining Ring	2
92001-11010001	Piston	1
92001-11010002	Piston Ring	2
92001-11020100	Needle Bearing	1

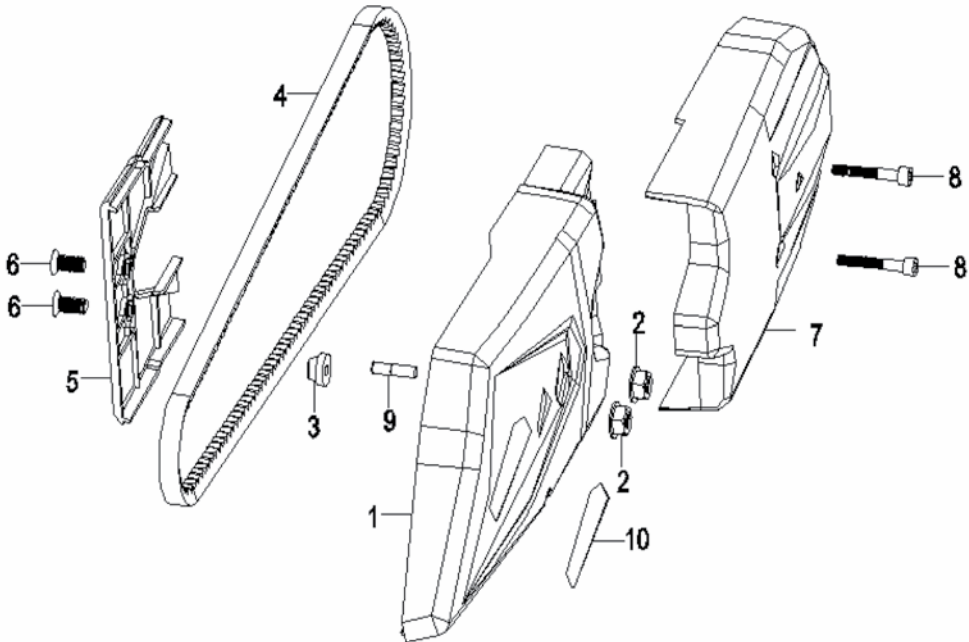


Diagram Number	Part Number	Description	Quantity Required
1	92001-01000001	Back Cover, Cutting Arm	1
2	FH6183.1-08-8	Flange Nut	2
3	92001-01000002	Grommet	1
4	92001-01000003	V-Belt	1
5	92001-01000004	Belt Cover	1
6	FH819.2-0514-88H	Bolt	2
7	92001-01000005	Right Belt Cover	1
8	FH70.1-0530-129	Bolt	2
9	92001-01000006	Pin	1
10	92001-17000001	Decal, Model Number	1

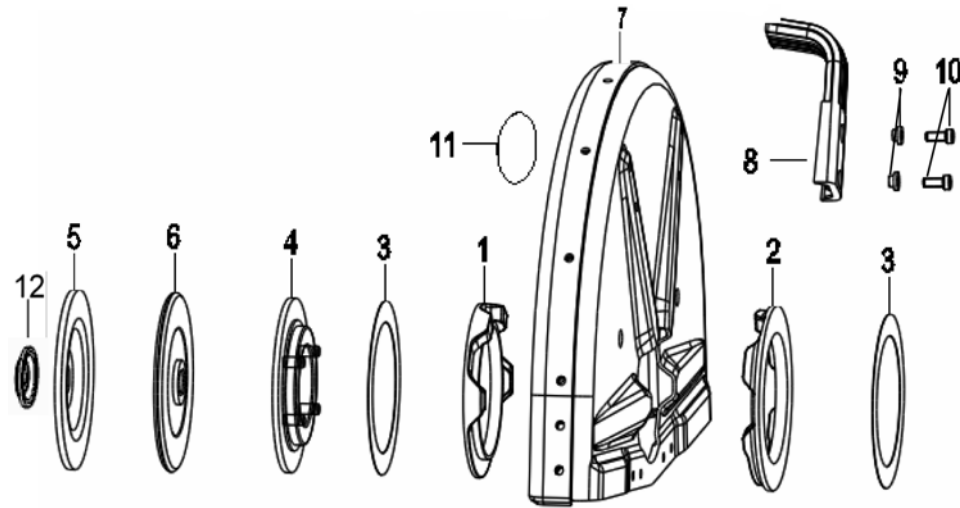


Diagram Number	Part Number	Description	Quantity Required
1	92001-01010001	Left Rubber Washer	1
2	92001-01010002	Right Rubber Washer	1
3	92001-01010003	Washer	2
4	92001-01010004	Guard Flange	1
5	92001-01010009	Outside Flange	1
6	92001-01010010	Inside Flange	1
7	92001-01010100	Blade Guard Complete	1
8	92001-01010011	Adjustment Handle	1
9	92001-01010012	Spacer	2
10	FH70.1-0512-129	Bolt	2
11	92001-17000007	RPM Decal	1
12	92001-01010013	Bushing	1

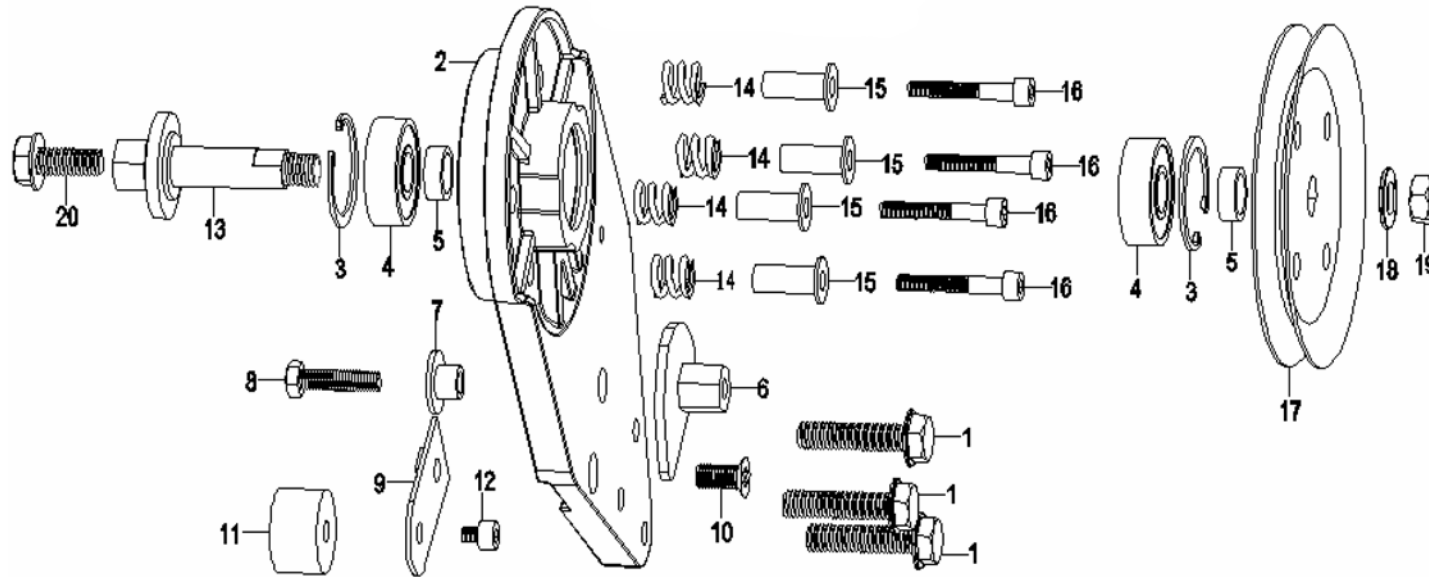


Diagram Number	Part Number	Description	Quantity Required
1	FH5789-0835-88	Hex Flange Bolt	3
2	92001-01010201	Cutting Arm, Front	1
3	FH893.1-32-65Mn	Clamp	2
4	6201	Ball Bearing, Cutting Arm	2
5	92001-01010007	Bushing	2
6	92001-01010202	Belt Tensioner	1
7	92001-01010203	Spacer	1
8	FH5783-0625-88	Screw	1
9	92001-01010204	Bracket	1
10	FH819.2-0616-88H	Bolt	1
11	92001-01010205	Rubber Washer	1
12	FH70.1-068-129	Bolt	1

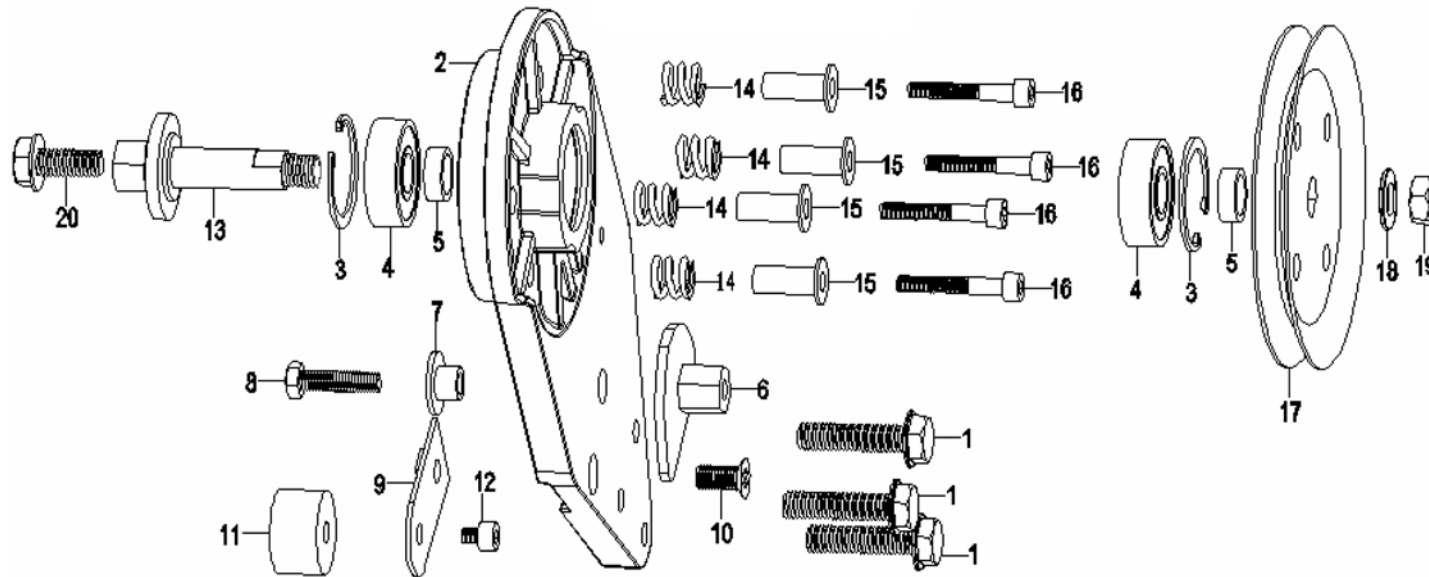


Diagram Number	Part Number	Description	Quantity Required
13	92001-01010206.01	Shaft, Front Cutting Arm	1
14	92001-01010005	Spring	4
15	92001-01010006	Spacer	4
16	FH70.1-0630-129	Bolt	4
17	92001-01010008	Pulley	1
18	FH848-12-200	Washer	1
19	C0210-19	Nut	1
20	DC5789-0820-88	Screw	1

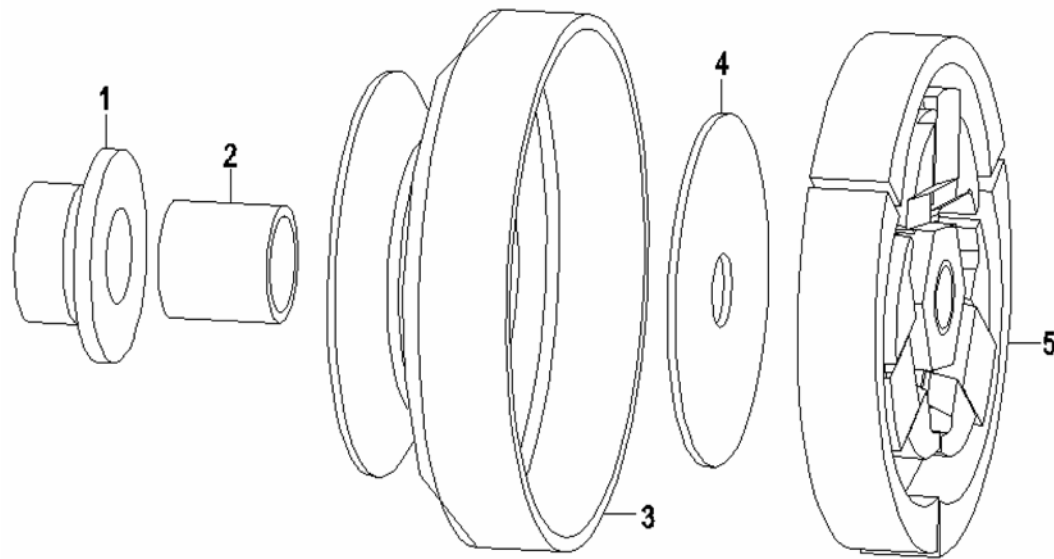


Diagram Number	Part Number	Description	Quantity Required
1	92001-02000001	Spacer	1
2	92001-02000002	Bushing	1
3	92001-02010000	Clutch Drum	1
4	CPI0-48	Clutch Washer	1
5	92001-02020000	Centrifugal Clutch Assembly	1

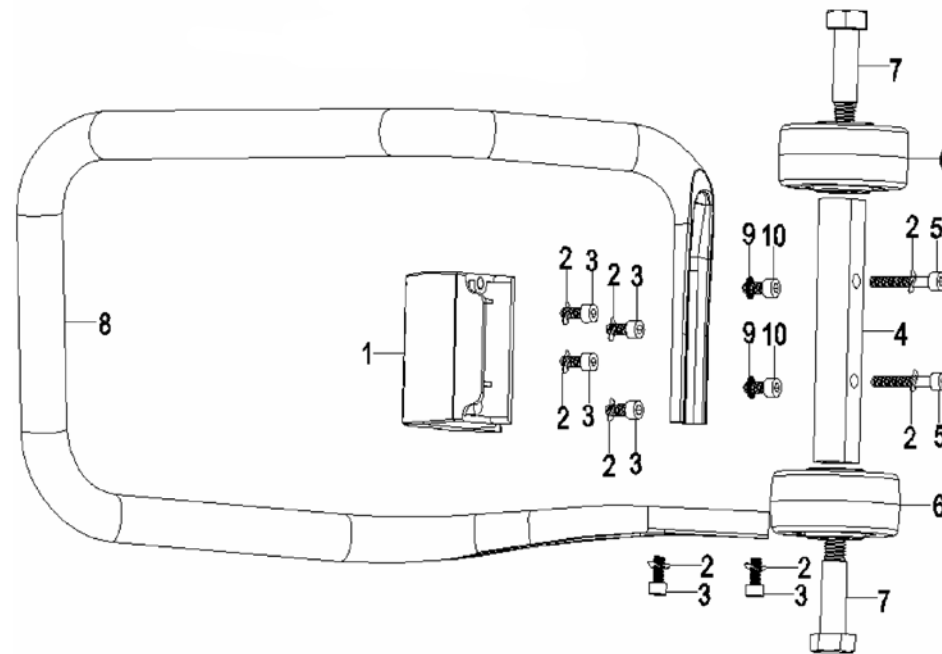


Diagram Number	Part Number	Description	Quantity Required
1	92001-03000001	Bracket	1
2	FH860-06-65Mn	Washer	8
3	FH70.1-0620-129	Bolt	6
4	92001-03000002	Roller Shaft	1
5	FH70.1-0630-129	Bolt	2
6	92001-03000003	Roller	2
7	C0110-50	Roller Screw	2
8	92001-03000004	Handle	1
9	CC06-10	Washer	2
10	FH70.1-0616-129	Bolt	2

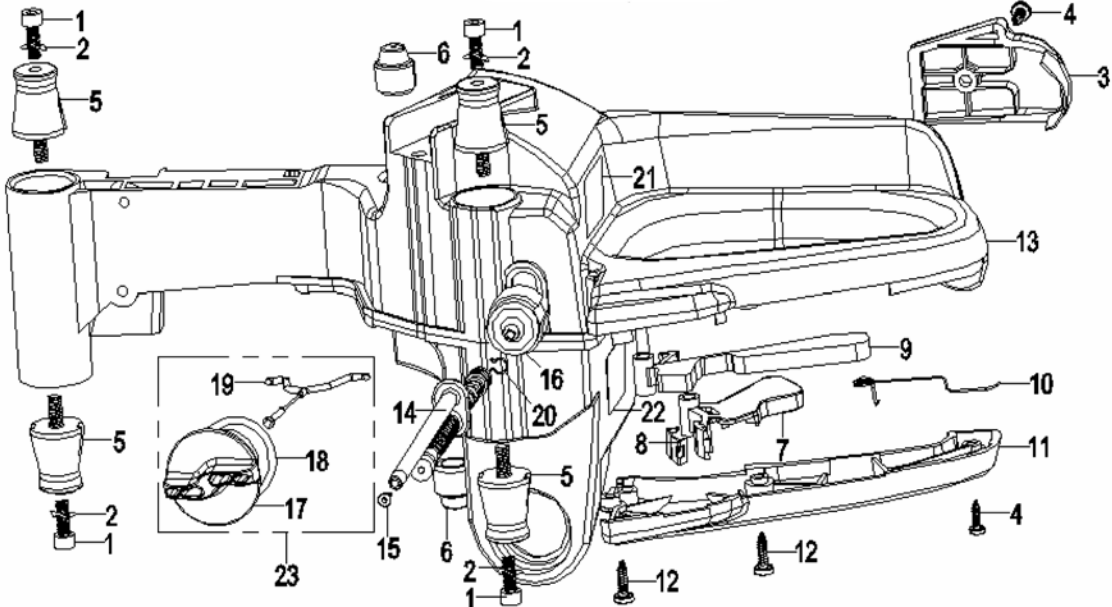


Diagram Number	Part Number	Description	Quantity Required
1	FH70.1-0512-129	Bolt	4
2	FH860-05-65Mn	Washer	4
3	92001-04000001	Handle Support	1
4	FH845-3.513-CH	Screw	2
5	92001-04000002	Front Vibration Isolator	4
6	92001-04000003	Rear Vibration Isolator	2
7	92001-04010001	Throttle Trigger	1
8	92001-04010002	Throttle Spring Piece	1
9	92001-04010003	Throttle Catch	1
10	92001-04010004	Throttle Catch Spring	1
11	92001-04010005	Left Handle Cover	1
12	FH845-4.216-CH	Screw	2

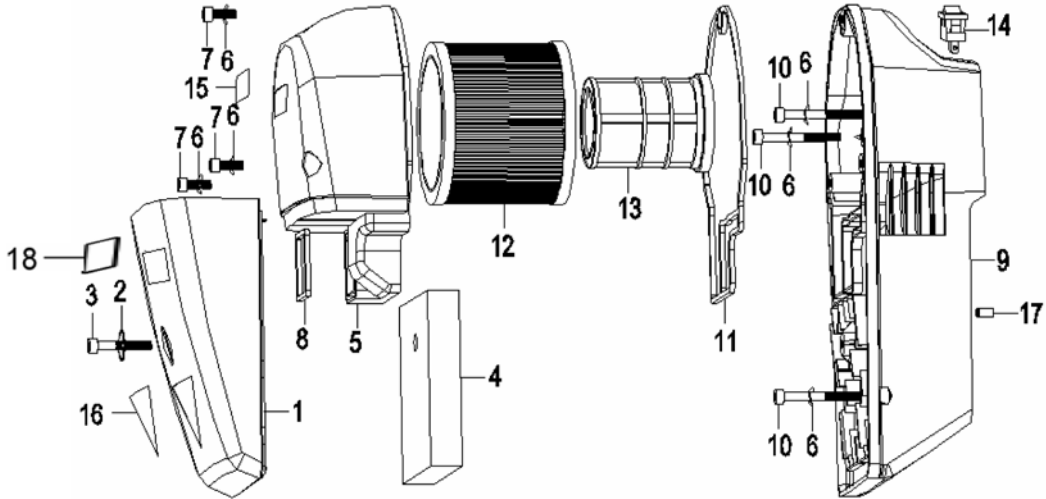


Diagram Number	Part Number	Description	Quantity Required
1	92001-05000001	Front Air Filter Cover	1
2	FH5287-05-100	Washer	1
3	FH70.1-0540-129	Bolt	1
4	92001-05000002	Foam Air Filter Element	1
5	92001-05000003	Rear Air Filter Cover	1
6	FH860-05-65Mn	Washer	6
7	FH70.1-0518-129	Bolt	3
8	92001-05000004	Seal	1
9	92001-05000005	Filter Mounting Cover	1
10	FH70.1-0565-129	Bolt	3
11	92001-05000006	Seal	1
12	92001-05010100	Paper Air Filter Element	1

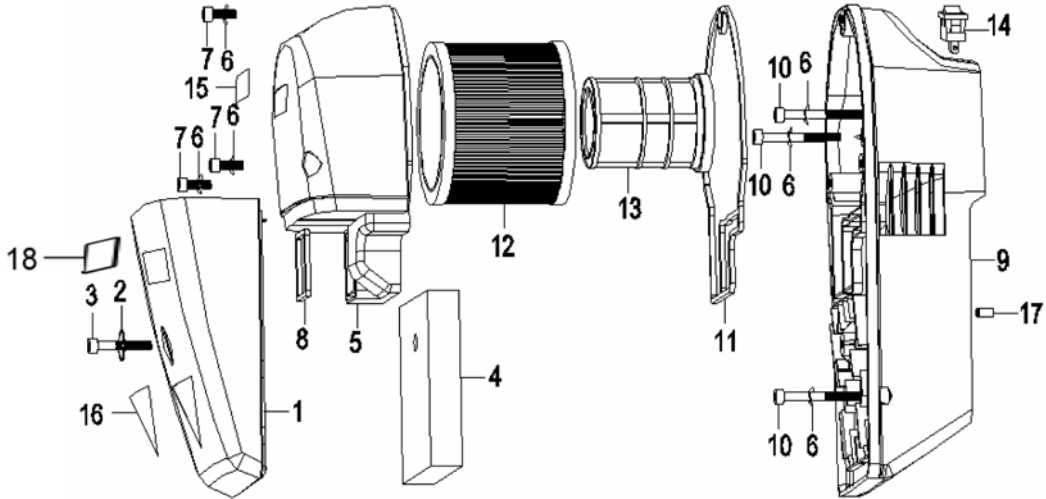


Diagram Number	Part Number	Description	Quantity Required
13	92001-05010200	Safety Filter	1
14	92001-05020000	Stop Switch	1
15	92001-17000003	Start procedure Decal	1
16	92001-17000002	Warning Decal	1
17	92001-05000011	Grommet	1
18	92001-17000004	Decal	1

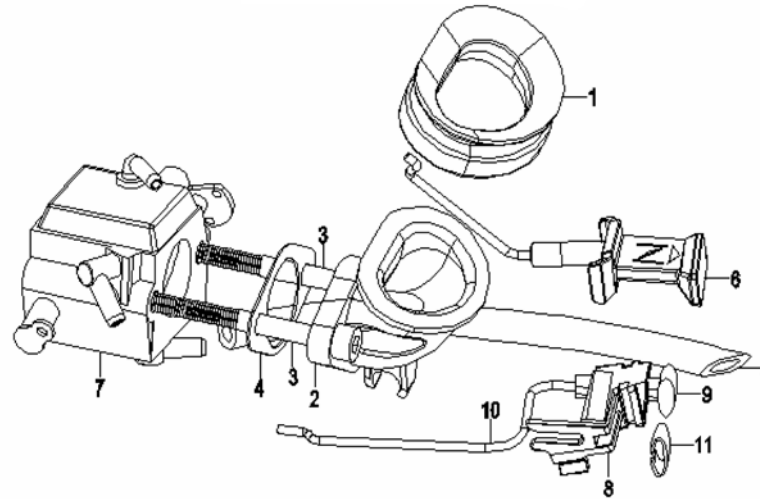


Diagram Number	Part Number	Description	Quantity Required
1	92001-08000001	Rubber Seal	1
2	92001-08000002	Intake Manifold	1
3	FH70.1-0555-129	Bolt	2
4	92001-08000003	Gasket	1
5	92001-08000004	Breather Hose	1
6	92001-08000005	Choke	1
7	HDA-232B	Carburetor Assembly	1
8	92001-05000007	Throttle Linkage Holder	1
9	92001-05000008	Throttle Bushing	1
10	92001-05000009	Throttle Rod	1
11	92001-05000010	Throttle Spring	1

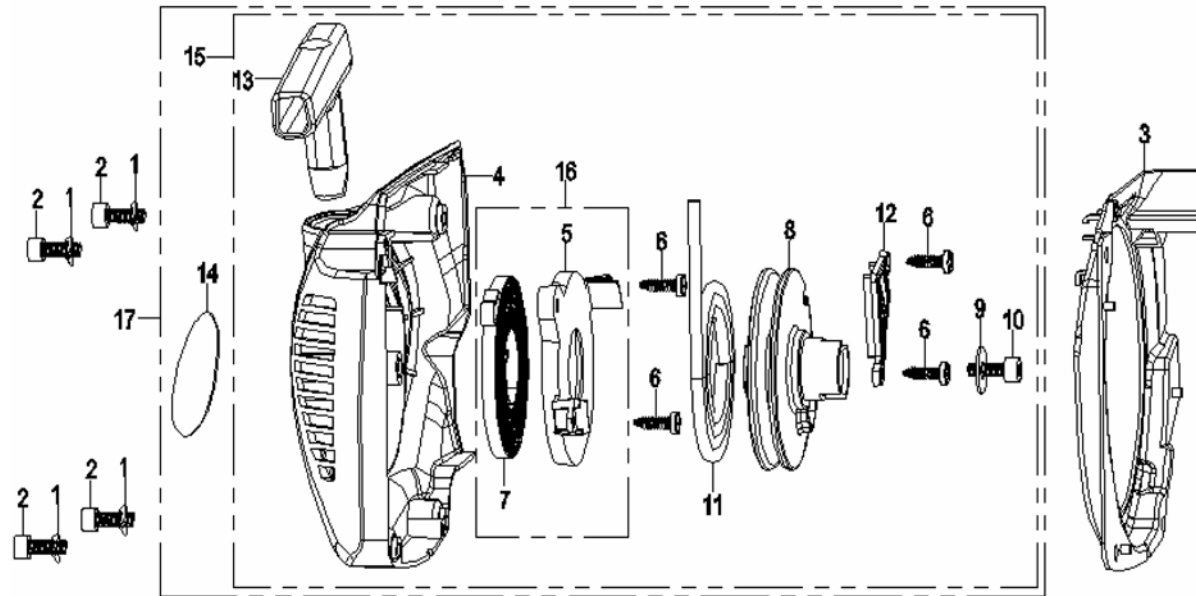


Diagram Number	Part Number	Description	Quantity Required
1	FH860-05-65Mn	Washer	4
2	FH70.1-0514-129	Bolt	4
3	92001-06000001	Air Conductor	1
4	92001-06010001	Starter Cover	1
5	92001-06010002	Recoil Spring Mount	1
6	FH845-3.513-CH	Screw	
7	92001-06010003	Recoil Spring	1
8	92001-06010004	Starter Pulley	1
9	CP06-16.5	Washer	1
10	FH70.1-0612-129	Bolt	1
11	92001-06010005	Starter Rope	1
12	92001-06010006	Baffle	1

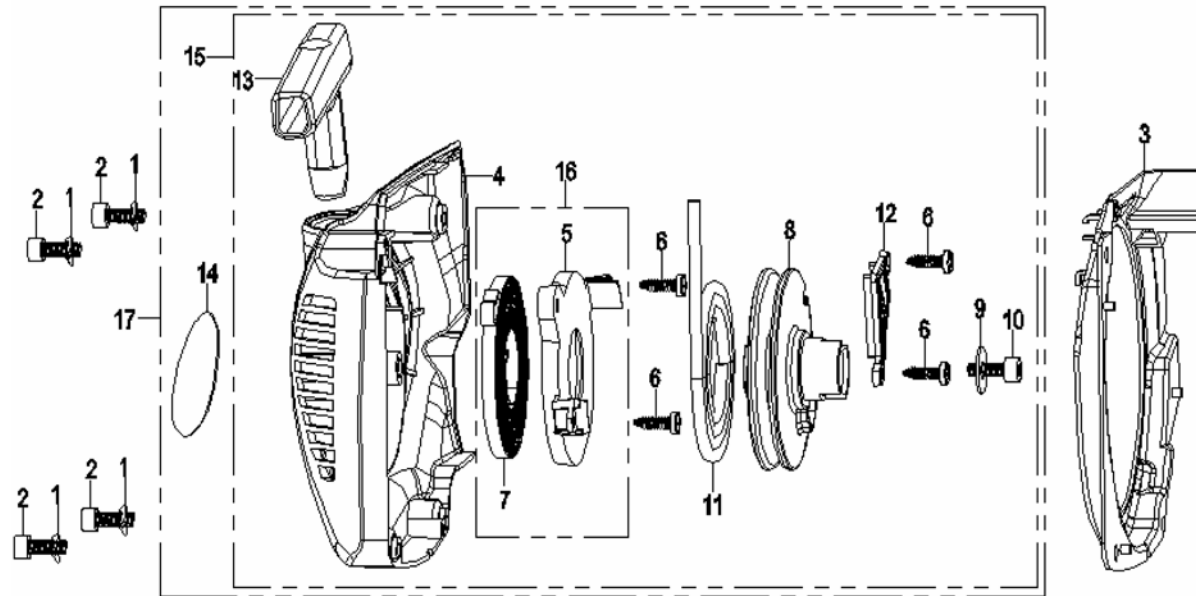


Diagram Number	Part Number	Description	Quantity Required
13	92001-06010007	Starter Handle	1
14	92001-17000001	Model Number Decal	1
15	92001-06010000	Starter Assembly	1
16	92001-06010100	Recoil Assembly	1
17	92001-06010000.02	Atarter Assembly With Label	1

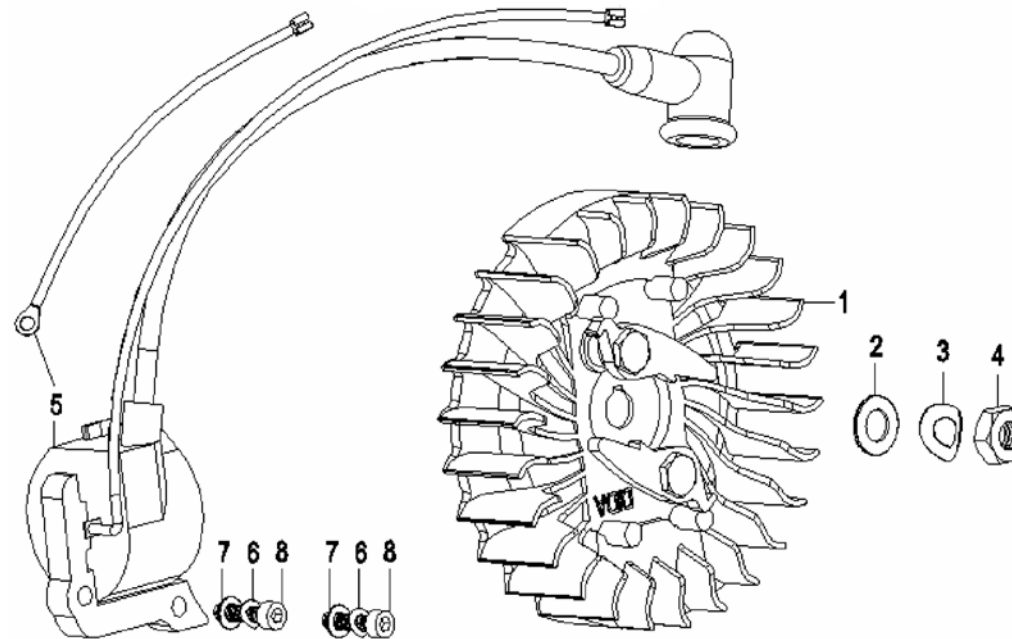


Diagram Number	Part Number	Description	Quantity Required
1	FH860-05-65Mn	Flywheel Assembly	1
2	FH848-08-200	Washer	1
3	FH860-08-65Mn	Washer	1
4	FH6176-08-8	Nut	1
5	92001-07020000.02	Ignition Assembly	1
6	FH860-04-65Mn	Washer	2
7	FH848-04-200	Washer	2
8	FH70.1-0420-129	Bolt	2

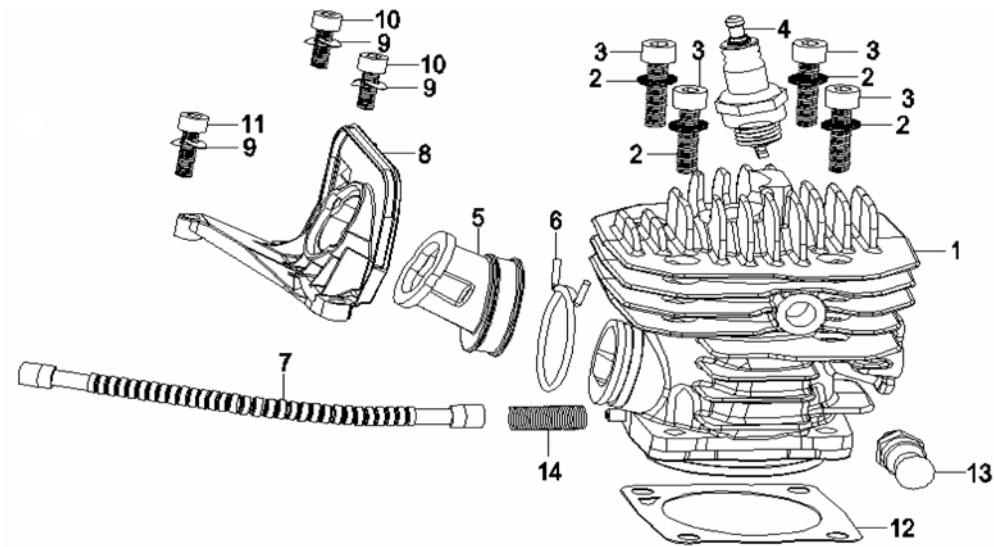


Diagram Number	Part Number	Description	Quantity Required
1	92001-09000001	Cylinder	1
2	CC06-10	Washer	4
3	FH70.1-0625-129	Bolt	4
4	T4106	Spark Plug	1
5	92001-09000002	Intake Manifold	1
6	92001-09000003	Clamp	1
7	92001-09000004	Cylinder Breather House	1
8	92001-09000005	Holder	1
9	FH860-05-65Mn	Washer	3
10	FH70.1-0514-129	Bolt	2
11	FH70.1-0516-129	Bolt	1
12	92001-09000006	Gasket	1

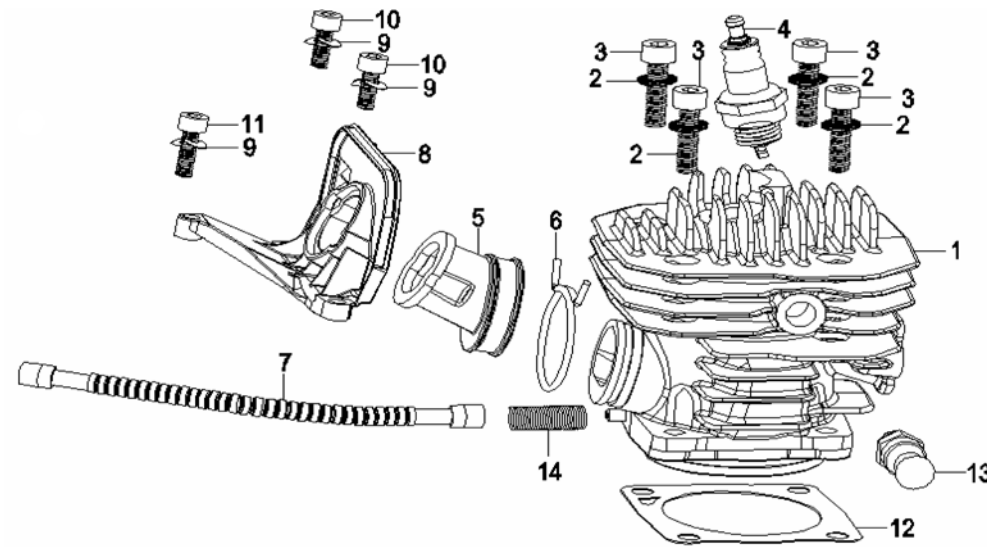


Diagram Number	Part Number	Description	Quantity Required
13	92001-09010000	Decompression Valve	1
14	92001-09000007	Spring	1

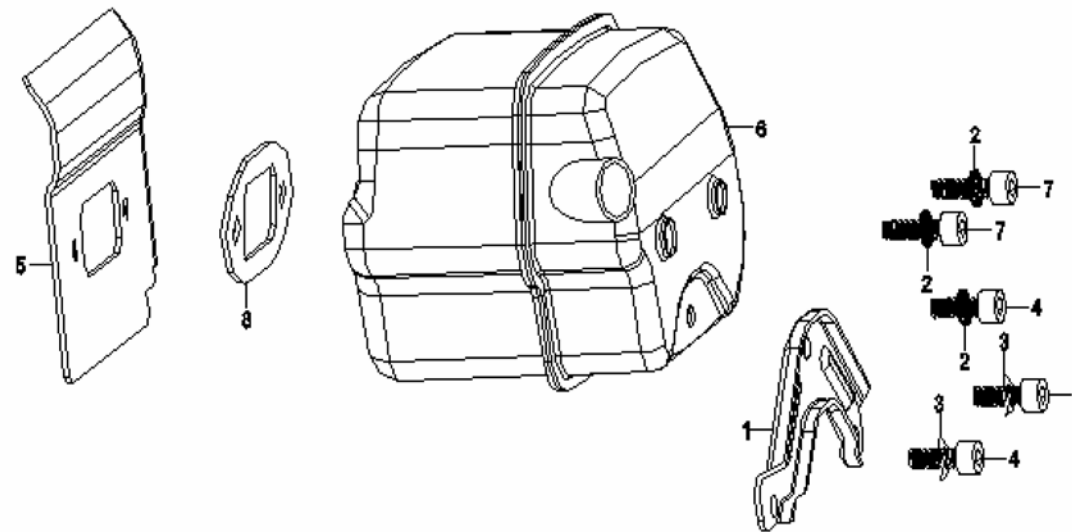


Diagram Number	Part Number	Description	Quantity Required
1	92001-10000001	Holder	1
2	CC05-09	Washer	4
3	FH860-05-65Mn	Washer	2
4	FH70.1-0514-129	Bolt	3
5	92001-10000002	Deflector	1
6	92001-10010000	Muffler	1
7	FH70.1-0518-129	Bolt	2
8	92001-10000003	Gasket	1

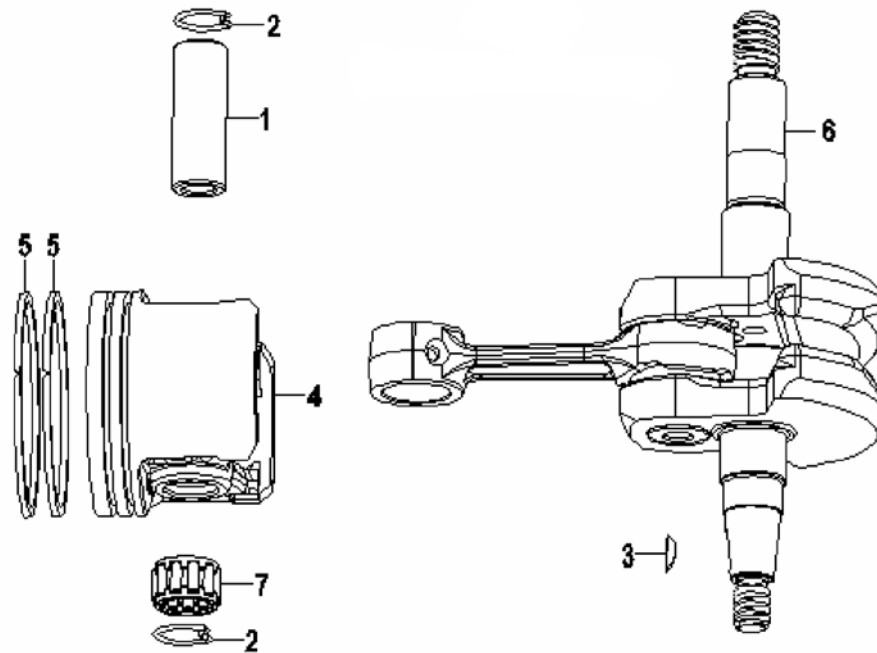


Diagram Number	Part Number	Description	Quantity Required
1	92001-11000001	Wrist Pin	1
2	92001-11000002	Retaining Ring	2
3	GB/T1099	Woodruff Key	1
4	92001-11010001	Piston	1
5	92001-11010002	Piston Ring	2
6	92001-11020000	Crankshaft Assembly	1
7	92001-11020100	Needle Bearing	1

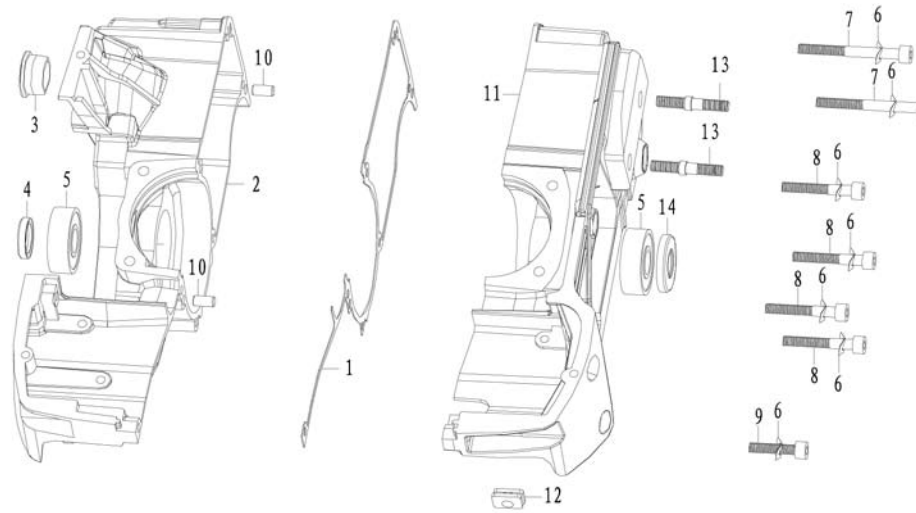


Diagram Number	Part Number	Description	Quantity Required
1	92001-1200001	Gasket	1
2	92001-12010001	Crankcase Left	1
3	92001-12010002	Cover	1
4	TB 13×20×4	Seal	1
5	6202	Crankcase Ball Bearing	2
6	FH860-05-65Mn	Washer	7
7	FH70.1-0550-129	Bolt	2
8	FH70.1-0535-129	Bolt	4
9	FH70.1-0522-129	Bolt	1
10	GB/T119.1	Guide Pin	2
11	92001112020001	Crankcase Right	1
12	92001-12020002	Grommet	1
13	92001-12020003	Stud Bolt	2
14	TB 15×28×4.5-5	Seal	1

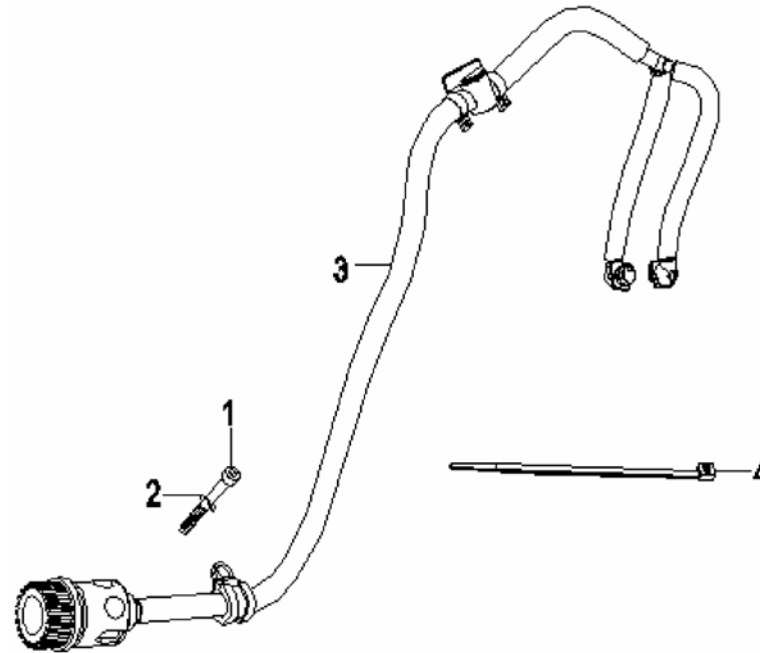


Diagram Number	Part Number	Description	Quantity Required
1	FH70.1-0545-129	Bolt	1
2	FH860-05-65Mn	Washer	1
3	92001-13010000	Water Kit	1
4	RCV-150	Tie Wrap	1



Edge Tools & Equipment Ltd, Unit 9, Victoria Centre, Victoria Way, Pride Park, Derby, DE24 8AN.
Tel: +44(0)1332 3210211 • Fax: +44(0)1332 210211 • Email: sales@edgediamond.com • www.jcbdiamond.com

JCB's Cut Off Saw is manufactured under license by Edge Tools & Equipment Ltd.